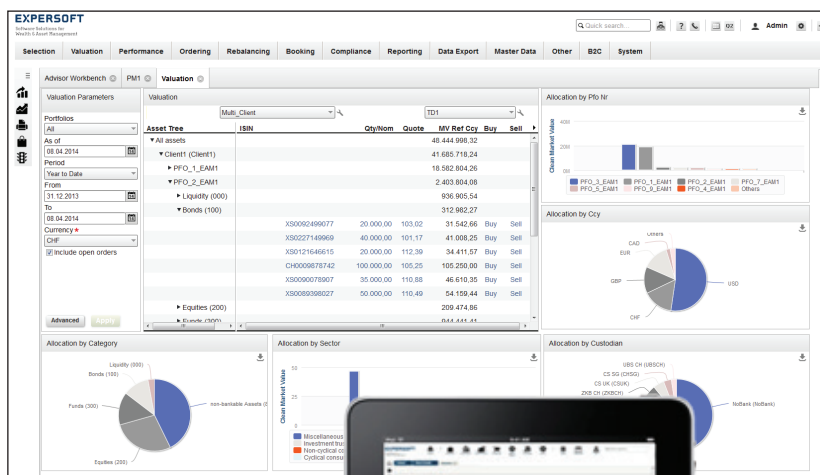


PM1 SaaS

Platform for Wealth & Asset Management

Wealth and Asset Managers demand reliable portfolio management and flexible reporting solutions. To focus on meeting this need, Expersoft offers its modular PM1 wealth management software as a rich Web-client Software as a Service (SaaS) platform. This FINMA compliant solution helps ensure that focus remains on the core business with IT operations managed in a trusted data-center that provides secure coverage of all portfolio management processes. Furthermore, additional services such as Data Management for bookings and reconciliation, etc., are available as services provided by the experienced Expersoft Data Management Team.

PM1 Basic is the core of the SaaS offering. This package provides the base functionalities for portfolio valuation and performance calculation for current and historical values, and key figures along a dynamic time axis. Any type of assets including liquid assets (e.g., liquidity, money market, bonds, equities, funds, etc.) and illiquid assets (e.g., private equity, real estate, art, etc.) can be easily handled. Furthermore, PM1 Basic provides a set of standard report templates which can be customized based on client needs. Multiple interfaces with custodian banks and data providers allow the direct processing of master, market, transaction, and position data. PM1 Basic is the right tool to perform state-of-the-art consolidated valuation and performance reporting.



Software Solutions
for Wealth & Asset Management

EXPERTSOFT

Member of the **atami** Living Systems Group

PM1 Advanced offers all features of PM1 Basic. In addition, the Advanced package covers Benchmarking, Performance & Risk Attribution and is a powerful integrated tool for detailed valuation of investment performance and risks. Calculated excess return, allocation effect, selectivity, tracking error, Sharpe ratio, Treynor ratio, etc., provide the basis for further investment actions. PM1 Advanced provides an extended set of standard templates for benchmark and risk attribution reporting.

PM1 Premium offers all features of PM1 Advanced, plus extensions for Order Management and Model Portfolio & Rebalancing. Order Management is performed via a customizable, integrated module for the preparation and execution of single, global and switch orders with pre-trade checks including management strategy, legal restrictions, individual client restrictions, and global restrictions.

The functionality Model Portfolio & Rebalancing enables the implementation of model portfolios based on recommendation lists and restrictions, the generation of rebalancing proposals, and the automated adjustment of portfolios. Model Portfolio & Rebalancing allows to record different model portfolios.

PM1 SaaS ensures the availability of proper master and market data. Data will be requested and uploaded from an indicated proprietary data provider. This service decreases the effort required for data administration, while supporting a fast and efficient security opening process.

Data Management is a client-oriented back office service provided by experienced Expersoft specialists covering transaction booking and reconciliation processes. Our clients benefit from no internal back office costs for data entry, checks, as well as fast and effective service for back office processing. The Data Management service is highly transparent as it is based on usage and volume.

Expersoft Systems provides leading-edge software products and services for retail and private banks, family offices, asset managers, brokers, and other financial service firms. With its first business year of operations in 1993, Expersoft currently serves over 600 clients worldwide.

Expersoft Systems AG
Hinterbergstrasse 20
6330 Cham/Zug, Switzerland
phone +41 41-748-1010, fax +41 41-748-1012
infoline@expersoft.com
www.expersoft.com

- FINMA compliant web platform (desktop & mobile)
- Multi-currency & multi-language
- Client administration
- Booking and position management of liquid & illiquid assets
- Portfolio valuation and performance measurement (TWR, MWR, IRR)
- Ad-hoc analysis (Asset Allocation, Cash Flow, Look-through, Statistics, etc.)
- Export to excel
- Consolidated client reporting

PM1 BASIC

- Benchmark definition
- Performance and risk attribution
- Track-record in line with GIPS
- Risk figures calculation and analysis (Volatility, R-Squared, Treynor Ratio, Treynor Black, Sharpe Ratio, Jensen's Alpha, Tracking Error, etc.)
- Value at Risk calculation & analysis

PM1 ADVANCED

- Model Portfolio definition and analysis (SAA/TAA)
- Recommendation lists
- Client and global restrictions & constraints
- Rebalancing
- Pre-trade compliance checks
- Ex post controlling and monitoring
- Order Management (single, global, switch)
- FX Hedge calculator

PM1 PREMIUM

Software Solutions
for Wealth & Asset Management

EXPERTSOFT

Switzerland • Germany • Luxembourg • Slovakia • United Kingdom
 Turkey • Dubai • Hong Kong • Singapore • Brazil